

USING THE WEB BROWSER

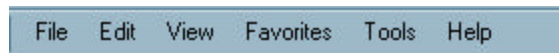
When we think of the Internet the most popular software application used on the internet is the web browser. A web browser allows you to see an **HTML** web page, view pictures, hear sounds and the web browser can run a java program. This is one way to play a game online.

The web browser also supports macromedia **plugins** that add new functions like multimedia to a web page.

Below are the basic parts of the Microsoft Internet Explorer web browser.



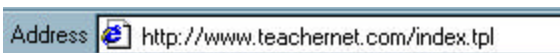
Title Bar - This is where the TITLE of the web page you are currently visiting will be displayed.



Menu Bar - These text menu categories will allow you to access ALL possible options by simply clicking on a menu title. For example, when you click on File, a drop-down menu appears with more options to select.

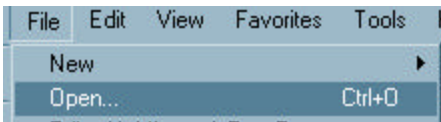


Tool Bar - These are **ICONS** that are shortcuts to the often used features from the menu bar. Usually an icon is for a task done frequently. For example, if you click the print icon, it will quickly print the current document but it will not let you select printers, set the number of copies or several other options available only through the menu bar.



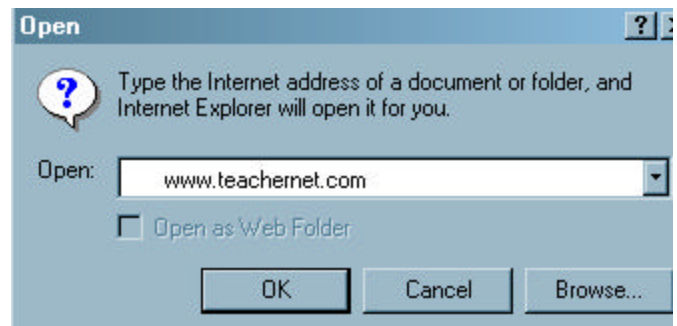
Address Bar - This shows you the web address of the page you are currently visiting. You can also type a new address here and hit the enter key to change web sites.

How do I visit a web page?



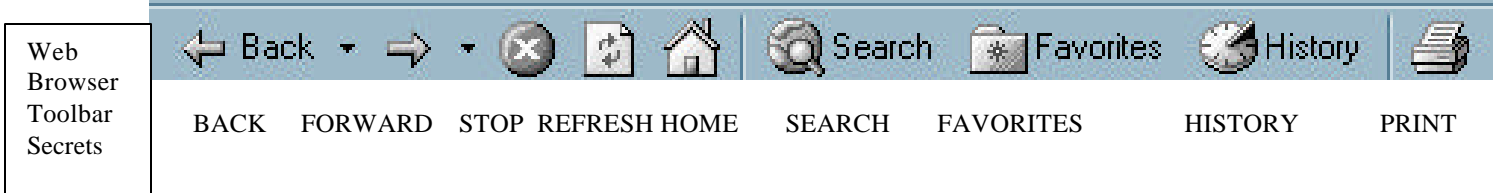
Usually, your browser will start up to a page that is called your

HOME PAGE. From this point you can visit another web site by simply clicking on File, Open and in the open box type in a web address like www.spsd.net (our district address for email).



How to navigate online.

When you are online you can use your mouse to click on a **HYPERLINK** (which allows you to instantly visit another web page that is **LINKED** to the site you are visiting. Your mouse cursor will change shape from an arrow to a hand when you are over a hyperlink. Hyperlinks can be text or pictures.



The **BACK** button will take you back one web site that you have previously visited. If you have a **HISTORY** of visiting 12 different web sites then you can click the back button 12 times to go back to the very beginning of your web exploration.

Next is the **FORWARD** button that takes you forward one web site. If these buttons are dim, it just means you have not visited enough web sites yet.

The **STOP** icon is for those sites that are **NOT** what you thought and you wish to stop the loading of the web page immediately. If you accidentally click a hyperlink to the wrong site, click the stop button and then click the back button.

The next Icon is the **REFRESH** button and that is used when a page slows down. When you click here it will attempt to reload the web page.

The **HOME** button will return you to your home page at any time.

The **SEARCH** button will take to a web search engine.

The **FAVORITES** folder is like the **BOOKMARK** folder in Netscape. It holds a list of web addresses so you can easily return to a web site without re-typing the address.

The **HISTORY** button will provide you with a list of which web sites have been visited and on which day.

The **PRINT** button will print the currently displayed web browser.

Using A Search Engine

An Internet **SEARCH ENGINE** is a database that is online for you to access information. You need to ask a question before you can receive a response. Type in what you are looking for and then click the Search button. The search engine will return a list of hyperlinks to specific web pages that match what you are looking for.

A Couple of good search engines to try are:

www.yahoo.com

www.askjeeves.com

Meta searches

www.dogpile.com

www.searchwiz.com

www.lycos.com www.excite.com www.altavista.com are other popular search engines. **NOTE:** There are over 1,000 different search engines on the Internet.

A search engine interface showing a text input field with the placeholder text "Type here" and a "Search" button to its right. An arrow points from the right towards the "Search" button.

Click here to process