

# POWERPOINT TRANSITIONS AND CUSTOM ANIMATION

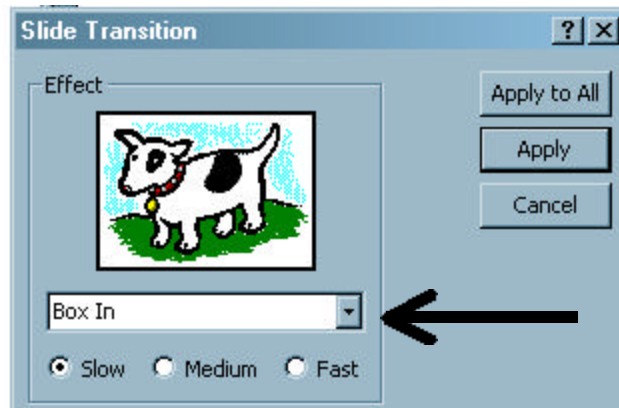
## SLIDE TRANSITIONS:

Transitions are the effects that occur in between the exit of one slide and the entrance of another slide.

Click on Slide Show, and select Slide Transition from the menu.

The Transition Box will appear and you can now select the type of transition effect you need.

Notice that **Box In** is selected, with a speed of Slow. You can apply it a single slide (Apply Button) or to change the transition effects of every slide in your presentation by clicking the **Apply to All** button.



**TIP:** Click on the Slide Show icon (the screen) in the lower left hand part of the screen to see what your current slide will look like without having to start at the beginning of your presentation. This is a real time saver.

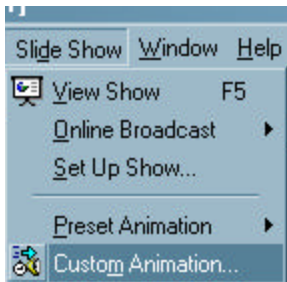


**ANIMATION:** While you can easily insert a picture from file and if it is an animated GIF file, it will be animated when in Slide Show view. However, PowerPoint allows you

to add custom animation effects to each individual object on your slide and control the order in which they appear on the slide.

## CUSTOM ANIMATION:

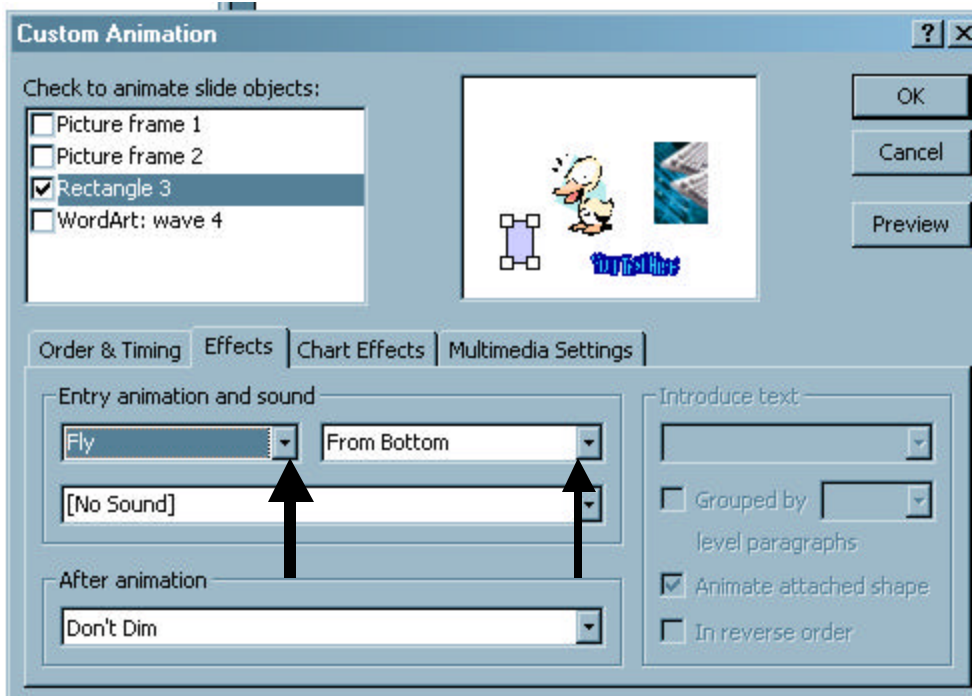
First, select the object you want to animate (text, picture, anything) then **click on Slide Show**, and **select custom animation** from the menu.



The Custom Animation Box appears and from the Effects Tab, you can choose

your animation from a menu of effects. You can also select how the effect appears in your presentation. When you have made a selection, click OK.

Inserting Images, Transitions and Custom Animation are important skills for using PowerPoint effectively.



**TIP:** If you have several objects and you want to control which object appears first, click on the Order and Timing tab to arrange the order sequence of animation.